

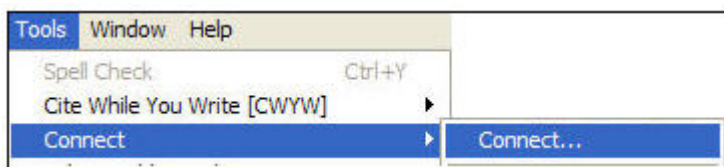
Connecting to a Database via EndNote X and EndNote Web



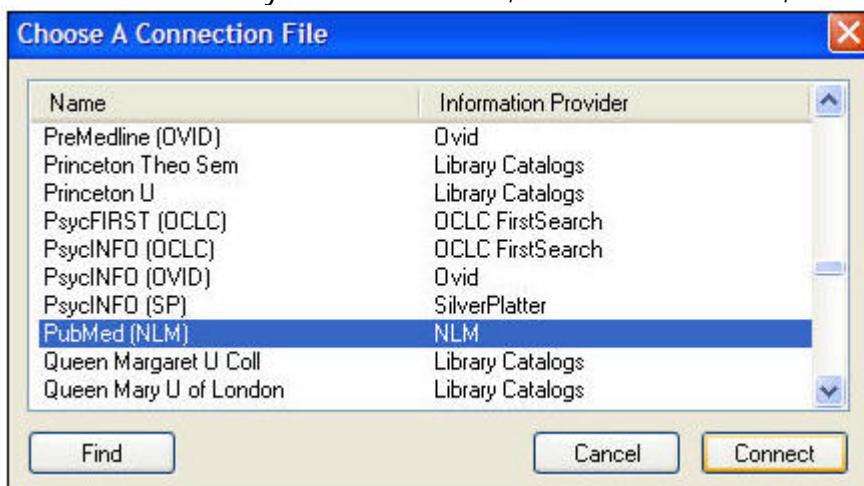
EndNote X and EndNote Web provide the capability to search databases directly from EndNote and seamlessly import citations into an EndNote library.

Searching a Database Via EndNote X

1. Select **Tools** on the menu bar and choose **Connect > Connect...**

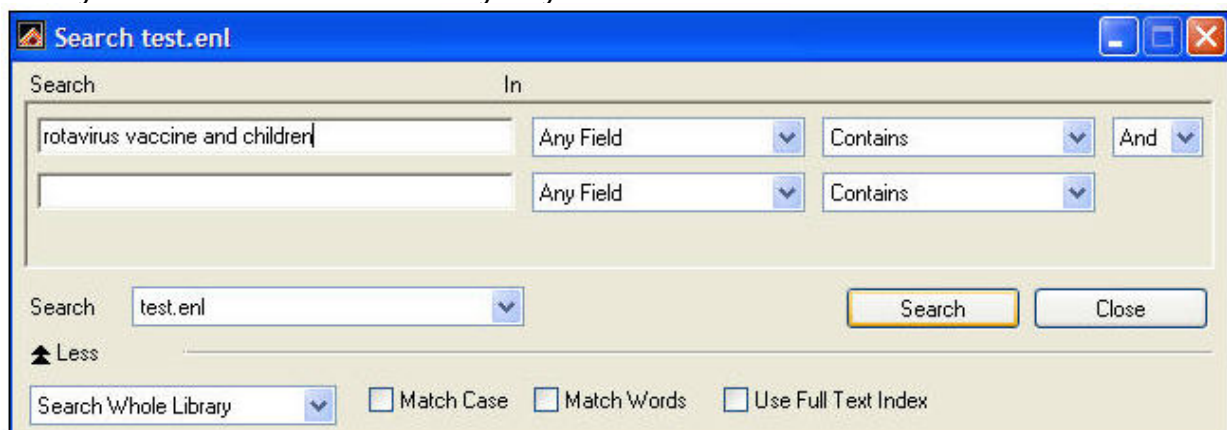


2. Select the database you wish to search, in this case PubMed, and click **Connect**.

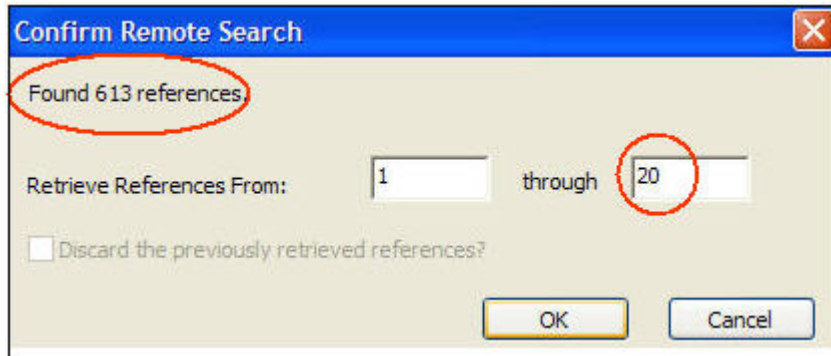


Note: Some database that are only available by subscription are not searchable via EndNote. If you are prompted for a UserID and password, see the **Connecting via EndNote** section of the Using EndNote Citation Software web page: <http://library.usu.edu/instruct/handouts/endnote/> or contact a librarian.

3. Enter your search. You will most likely only have a limited selections of fields in to search.



- Click **Search**.
- Enter the number of references you want to view. In this example, we will look at the first 20 of the 613 references that were retrieved in the above search.



- Click any of the references to view the full record in the bottom pane.

Author	Year	Title	URL
O'Ryan	2007	Impact of Rotavirus Infec...	http://www.ncbi.nlm.nih.g...
Kang	2006	Rotavirus vaccines	http://www.ncbi.nlm.nih.g...
Lu	2006	Disease burden and rel...	http://www.ncbi.nlm.nih.g...
Ramani	2006	Geographic information ...	http://www.ncbi.nlm.nih.g...
Wiederma...	2006	Vaccines against travel...	http://www.ncbi.nlm.nih.g...
Constenla	2006	[Potential cost effectiven...	http://www.ncbi.nlm.nih.g...
Moon	2007	Genetic distribution of g...	http://www.ncbi.nlm.nih.g...
Lambert	2006	[Vaccination against Ro...	http://www.ncbi.nlm.nih.g...
Boudville	2006	The epidemiology of pa...	http://www.ncbi.nlm.nih.g...
Kiulia	2006	Molecular characterisati...	http://www.ncbi.nlm.nih.g...
Staat	2006	Rhesus rotavirus vaccin...	http://www.ncbi.nlm.nih.g...
Panknin	2006	[Nosocomial rotavirus in...	http://www.ncbi.nlm.nih.g...
Gjersvik	2006	[Vaccination against rot...	http://www.ncbi.nlm.nih.g...
Bernstein	2006	Live attenuated human r...	http://www.ncbi.nlm.nih.g...

Kang, G. (2006). "Rotavirus vaccines." *Indian J Med Microbiol* **24**(4): 252-7.
 Rotavirus, the most common cause of severe diarrhea and a leading cause of mortality in development for the past several years. The first rotavirus vaccine licensed in the United S the vaccine with intussusception. However, the need for a vaccine is greatest in the develo deaths due to rotavirus disease are substantially greater than the risk of intussusception. E recently developed and licenced vaccines are either animal-human reassortants or are ba vaccines are in the development process, but have not yet reached efficacy trials. Many ch remain. In addition to completing clinical evaluations of vaccines in development in setting there is also a need to consider alternative vaccine development strategies.

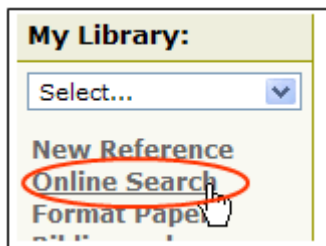
- To place the citations in an EndNote library, click the **Copy 1 Reference To** button and

choose the library where you want put the citation. If you do not have any references selected, the Copy All References button will be visible.

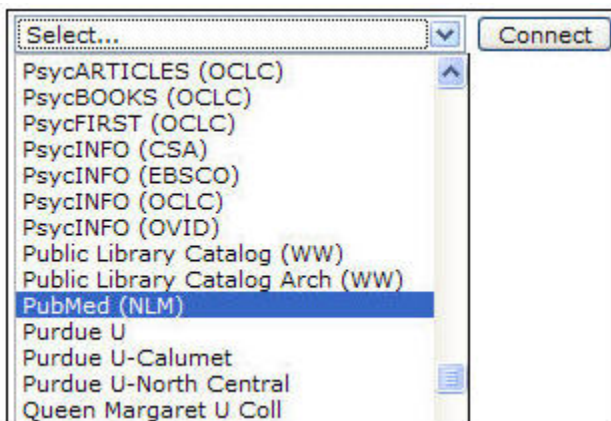


Searching a Database Via EndNote Web

1. Click **Online Search** in the left menu bar.



2. Choose the database you want to search, PubMed in this example, from the drop-down list.



3. Click **Connect**.

Note: Most database that are only available by subscription are not searchable via EndNote Web. If you are prompted for a password, you most likely cannot search the database via EndNote Web. However, you can search free databases and most library catalogs. Please contact a librarian if you have questions.

4. Enter your search terms and click **Search**.

Search criteria:

rotavirus vaccine and children	in:	Any Field
	in:	Any Field
	in:	Any Field
	in:	Any Field

5. Review the number of citations retrieved and click **Retrieve**. If you have a large number of citations, choose the range you would like to retrieve.

Online Search: Connected to PubMed MEDLINE

Found 21 results:

Retrieve through

6. Click the title of a desired citation to view the full record.

<input type="checkbox"/>	Fischer, TK	2005	-	Health care costs of diarrheal disease and...
<input type="checkbox"/>	Simonsen, L	2005	-	More on RotaShield and intussusception: the...
<input type="checkbox"/>	Glass, RI	2005	-	Rotavirus vaccines: targeting the...
<input type="checkbox"/>	Widdowson, MA	2005	-	Rotavirus disease and its prevention.

7. In the **Optional Fields** section, you might find a link to the full-text of the article, if it is available, or a link to the database you searched. If a link is not shown, look up the journal title in Electronic Journals List or the Online Catalog. Please ask a librarian if you have questions.

Optional Fields:

Date: 2005 Sep

ISSN: 0022-1899

Accession Number: 16088799

Keywords: Administration, Oral; Child, Preschool; Clinical Trials; Costs and Cost Analysis; Developing Countries; Diarrhea; Genotype; Humans; Immunization Programs; Infant; Infant, Newborn; Intussusception; Patient Admission; Rotavirus; Rotavirus Infections; Rotavirus Vaccines; Vaccines, Attenuated; World Health

URL: <http://www.ncbi.nlm.nih.gov/entrez/query.fcgi...>

Author Address: Viral Gastroenteritis Section, Centers for Disease Control and Prevention, Atlanta, GA 30333, USA.
rglass@cdc.gov

Language: eng

8. Place a checkmark at the citations you want to save, or click the **Check Page** button.

<input type="checkbox"/>	Simonsen, L	2005	-	More on RotaShield and intussusception: the...
<input checked="" type="checkbox"/>	Glass, RI	2005	-	Rotavirus vaccines: targeting the...
<input checked="" type="checkbox"/>	Widdowson, MA	2005	-	Rotavirus disease and its prevention

9. Click the **Copy selected references to** drop-down box and choose the folder to which you want to move the citations.

