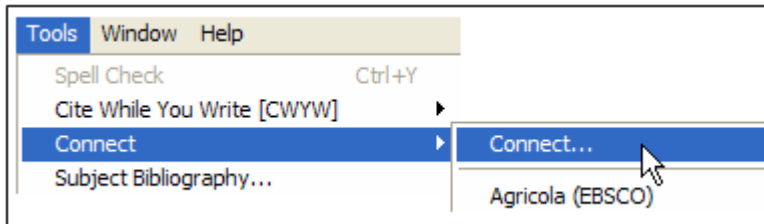


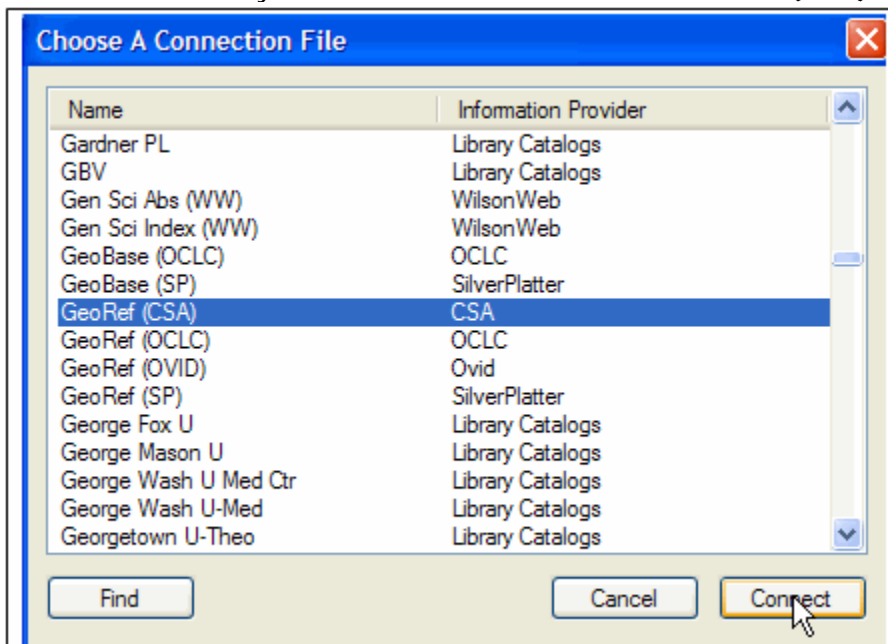
Connecting to CSA Databases via EndNote X



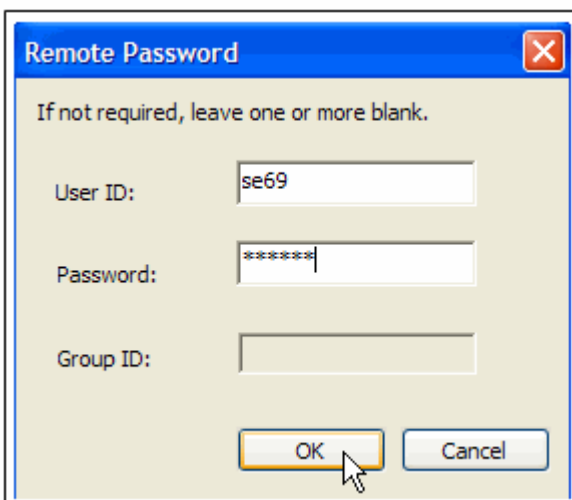
1. Select **Tools** on the menu bar and choose **Connect > Connect...**



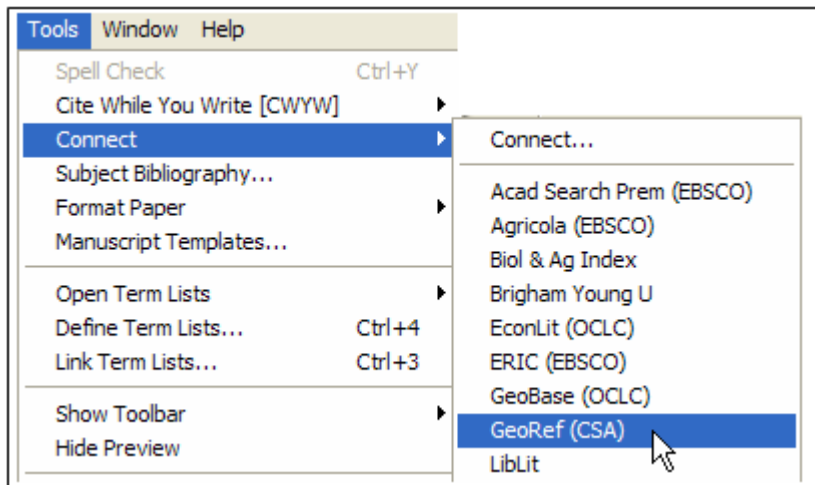
2. Select the database you wish to search, in this case **GeoRef (CSA)**, and click **Connect**.



3. Enter the User ID: **se69** and the password: **se6969** when prompted.



After you connect to a particular database, the database will appear in the frequently-used database list below Connect...



Note: The database will also check your computer's IP address, so if you are searching off-campus, you will need to be logging in via the USU Proxy Server or using VPN. See [Off-Campus Access to Library Resources](#).