

Connecting Through VPN

What is VPN?

A VPN, or Virtual Private Network, provides a secure communication channel to a private network (in this case, the USU network) through a public network (the Internet). By loading the USU VPN Client, you will be able to communicate with the USU firewall and authenticate yourself as a member of the USU network. Once the VPN is connected, you will essentially be connected to the USU network and all IP traffic to and from your machine will pass through the USU servers just as if you were connected through the ethernet. In other words, your connection will mimic a LAN connection. **NOTE:** *If you are behind a corporate firewall, you will need to contact your local systems administrator to open your own firewall for the VPN client.*

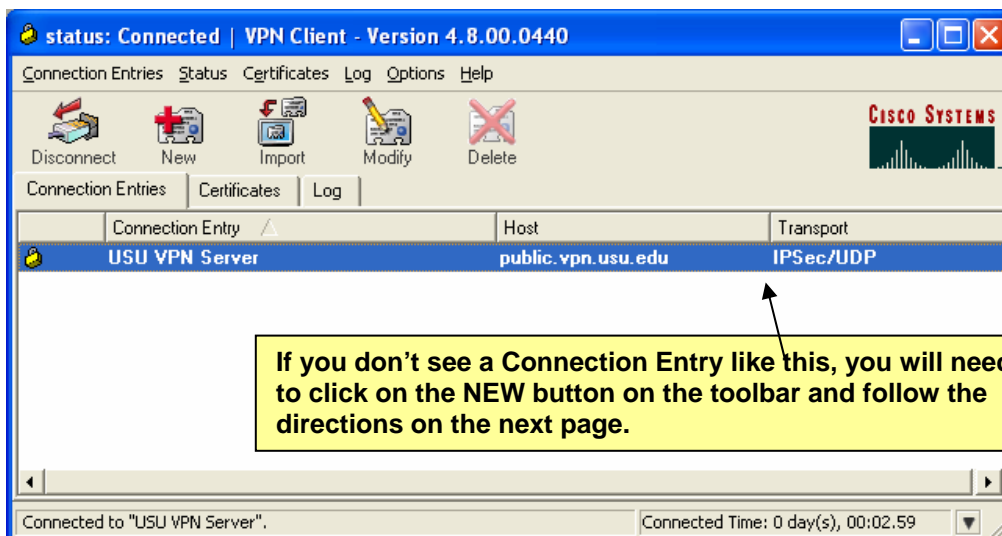
Where do I get the VPN Client?

The VPN client is available from Network and Computing Services on a CD-ROM for a fee of \$1.00. You can pick it up in Room 108 of the SER building. Alternatively, you can download the software from the Help Desk website: <http://helpdesk.usu.edu/content/downloads/index.php>.

NOTE: *You must have a username@cc.usu.edu email account established in order to obtain and configure this client! Additionally, DSL users should review this important information: <http://helpdesk.usu.edu/pdf/ethernet/VPNDSL.pdf>. Those using a cable modem or dial-up connection should not be impacted by this second set of instructions.*

Tips for Setting-up VPN

- As you are first installing the VPN Client you may be asked to disable the IPSec Policy. You must do this in order to complete the installation.
- Follow the rules and read the software agreement.
- As the program is initially installing, make sure to notice where you have saved the program on your hard drive so that you will be able to locate it.
- You must restart your computer before configuring the client for the first time.
- Following installation and rebooting your machine, you will need to configure the client. Go to the Cisco Systems VPN Client folder (created upon installation) and open the VPN Client. You should see a window like the following:



- Once you click on the New button, you will need to fill out the requested information. Some of the fields are not required—just make sure to include the following so that the box on your machine looks like the box on the next page:

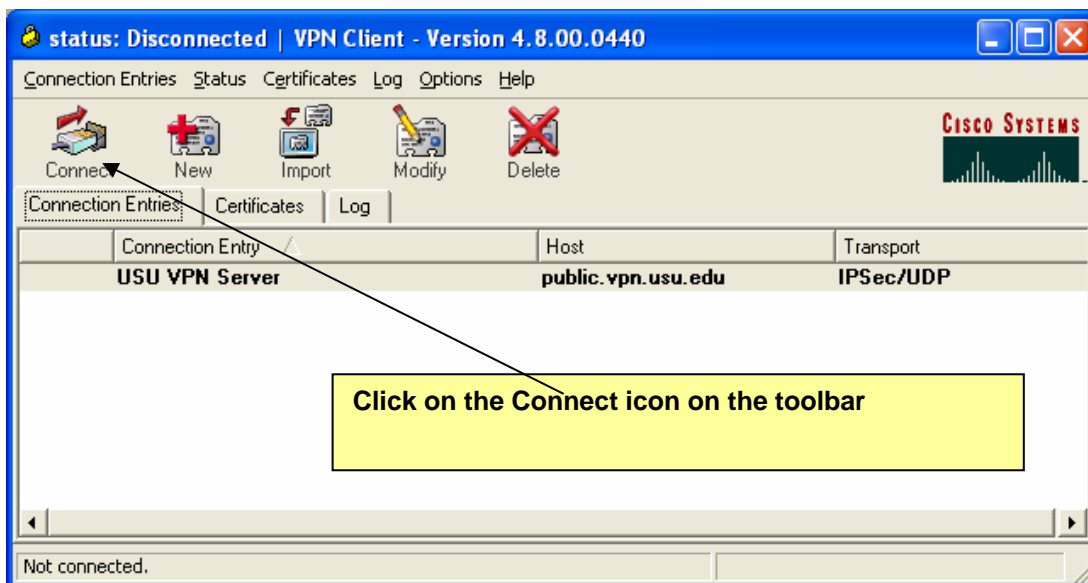
Connection Entry: USU VPN Server

Host Name: public.vpn.usu.edu

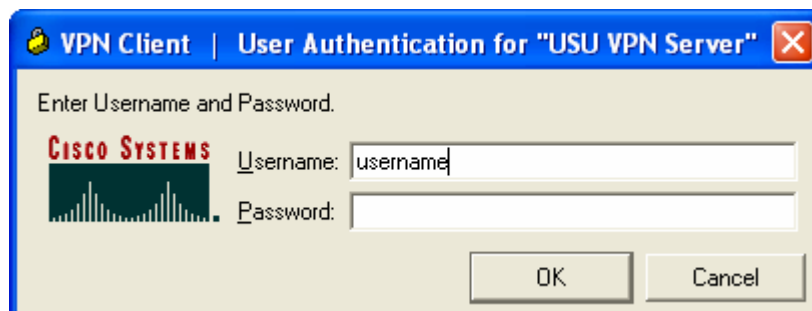
Group Access Information (Select Group Authentication): Name=USU and Password=UsUs (case sensitive).



Next you will need to ask the VPN client to connect to the USU network.



Finally, you will need to login to the network by supplying the username and password for your cc.usu.edu email account:



That's It! You're done! Simply load your browser and begin work.